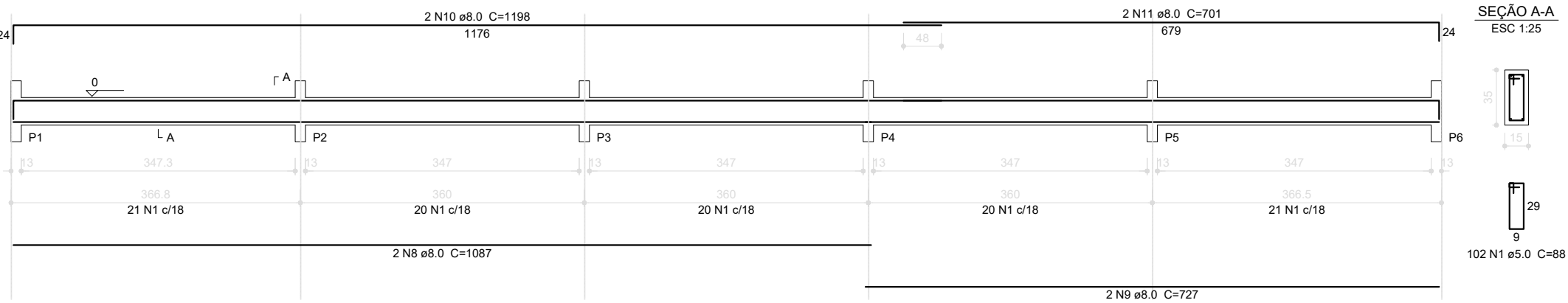
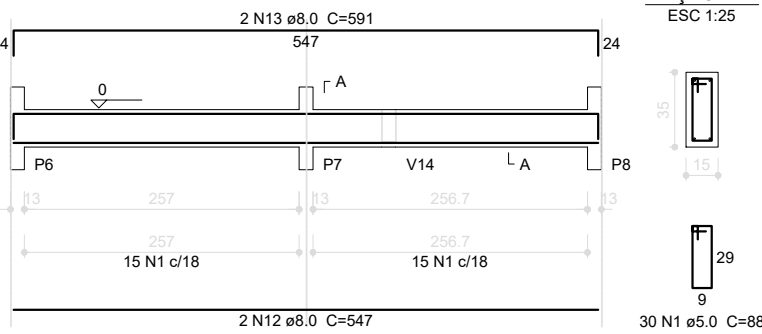


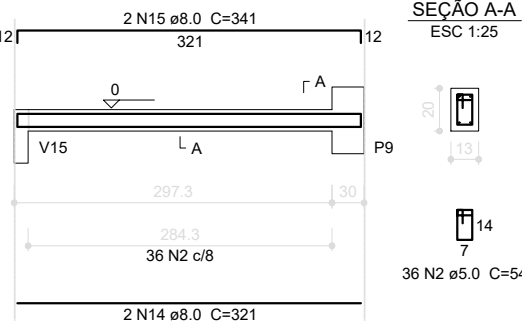
V1
ESC 1:50



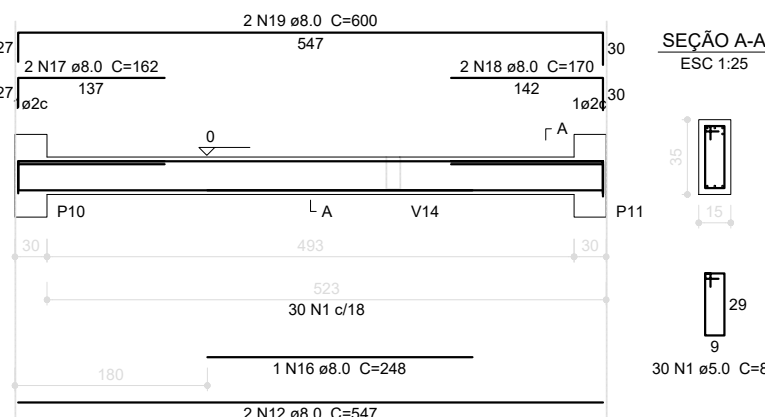
V2
ESC 1:50



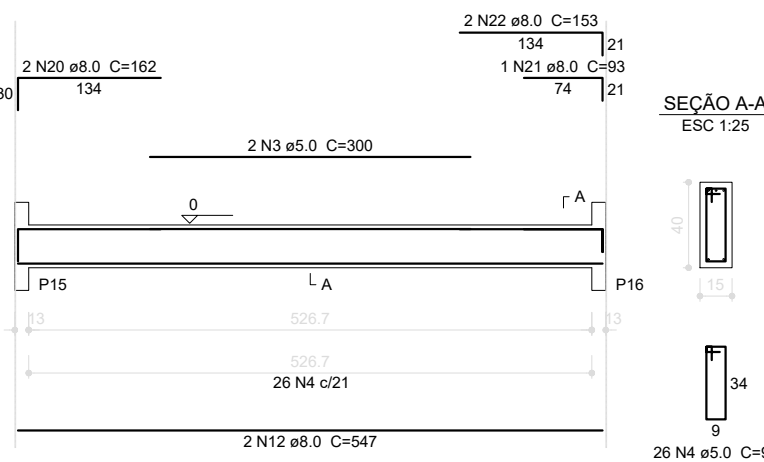
V3
ESC 1:50



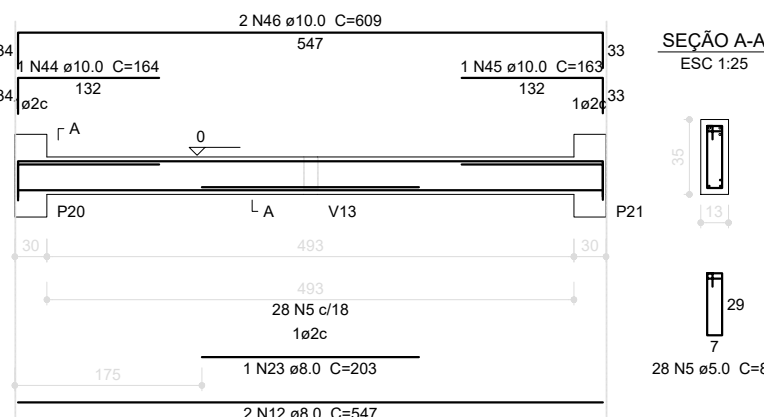
V4
ESC 1:50



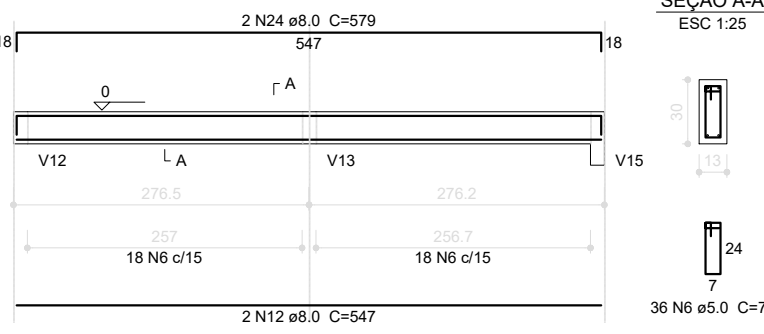
V5
ESC 1:50



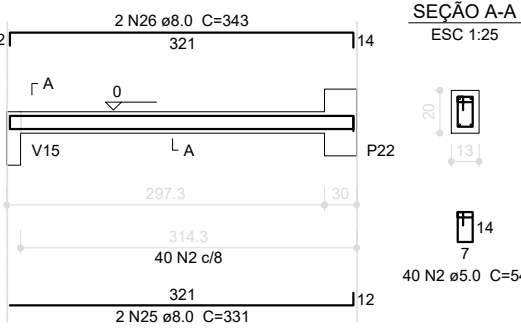
V6
ESC 1:50



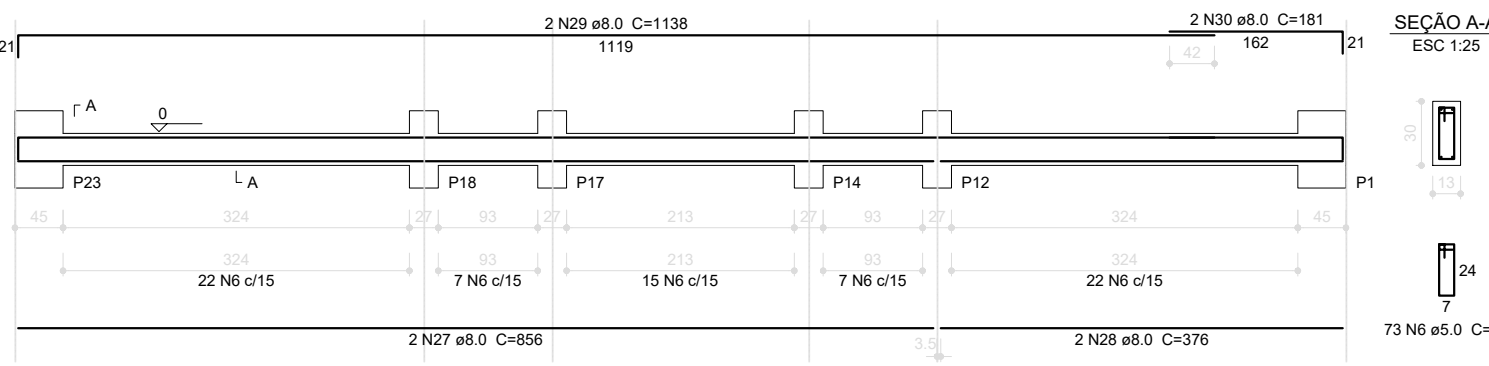
V7
ESC 1:50



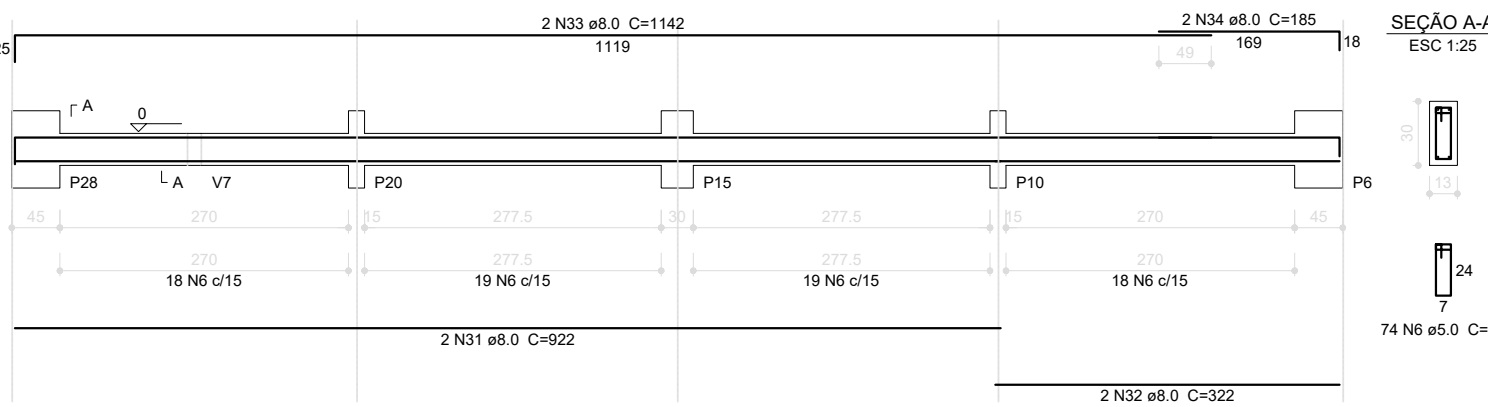
V8
ESC 1:50



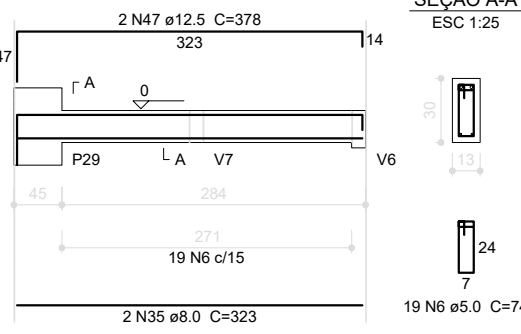
V11
ESC 1:50



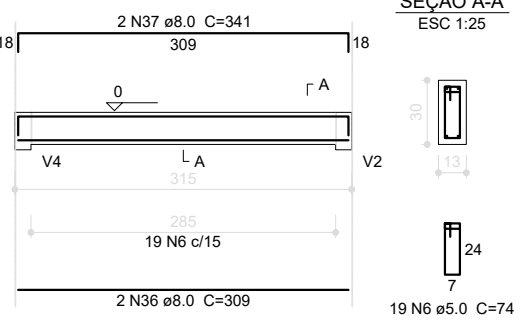
V12
ESC 1:50



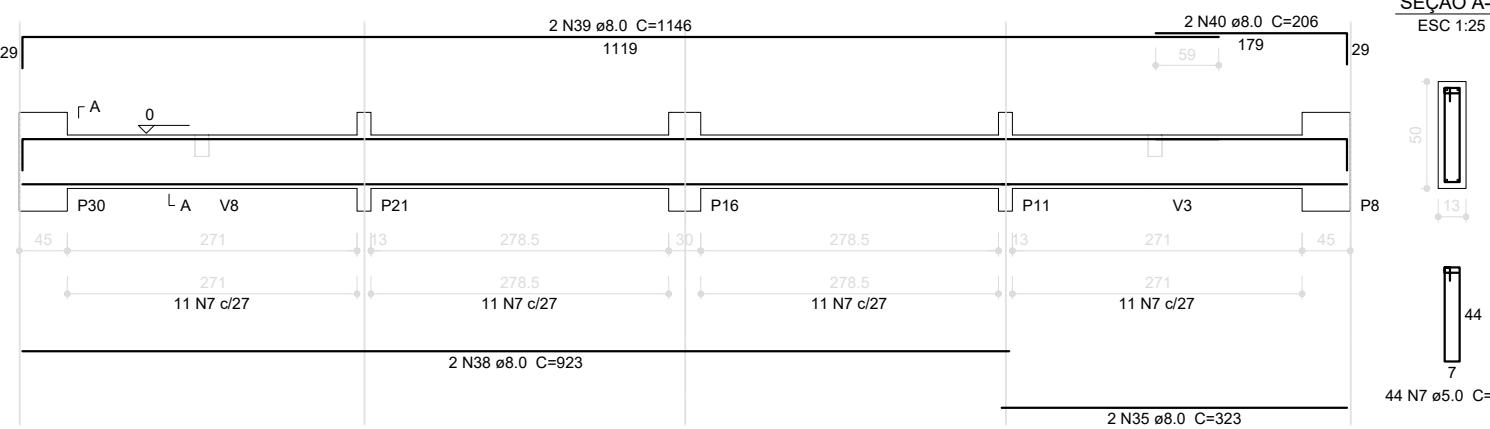
V13
ESC 1:50



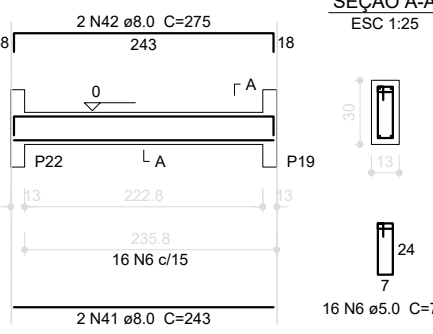
V14
ESC 1:50



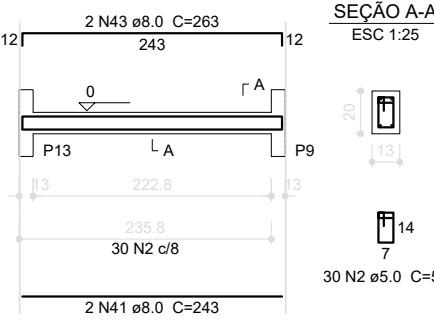
V15
ESC 1:50



V16
ESC 1:50



V17
ESC 1:50



Resumo do aço

AÇO	DIAM (mm)	C.TOTAL (m)	PESO (kg)
CA50	8.0	403.8	159.5
	10.0	15.5	9.6
	12.5	7.9	7.3
	5.0	480.4	74.0
PESO TOTAL (kg)			
CA50	176.4		
CA60	74.0		

Volume de concreto (C-25) = 4.69 m³
Área de forma = 82.24 m²

FNDE

Fundo Nacional de Desenvolvimento da Educação

Ministério da Educação

GOVERNO FEDERAL

BRASIL

PAÍS RICO E PAÍS SEM POBREZA

PROJETO PADRÃO - FNDE

PROPRIETÁRIO: :
ENDEREÇO:
MUNICÍPIO - UF:
PROPRIETÁRIO
RESP. TÉCNICO CREA
AUTOR DO PROJETO CAU
DLFO CREA
RA
OBSERVAÇÕES:
ESCOLA 12 SALAS DE AULA
PROJETO DE ESTRUTURA
COORDENAÇÃO CGEST - Coordenação Geral de Infraestrutura Educacional
BLOCO D: PEDAGÓGICO
VIGAS NÍVEL 000
SCV
REVISÃO R.03
ESCALA INDICADA
PRANCHA 22/42
FORMATO (1140x594)
DATA EMISSÃO MAIO/ 2014